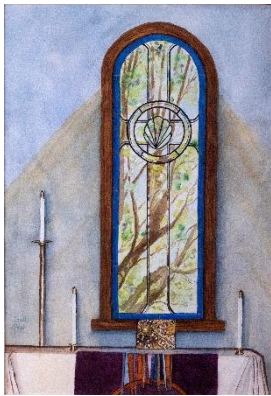


St. Luke's Episcopal Church

House Call Newsletter

September 2022

Listening to the Voice of Creation



The earth is the Lord's and all that is in it, the world, and those who live in it, for he has founded it on the seas and established it on the rivers.

Psalm 24:1-2

September marks the turning of the new season, as summer heat gives way to cooler autumn breezes (a real relief this year), vacations draw to a close, children go back to school, and all of us return to our busy lives. Fall is a time of harvest, a time when we gather in the fruits of our labors and make a final push to finish up work before Thanksgiving and Christmas. For many of us, it's the busiest season of the year.

September is also the start of a relatively new Christian tradition. The Episcopal Church invites us to unite with churches around the world in celebrating the Season of Creation. For five weeks, we will join with our fellow Christians in this "time for renewing, repairing and restoring our relationship to God, one another, and all of creation." The symbol for this year's Season of Creation is the burning bush, and its theme is "Listening to the Voice of Creation." At a time when catastrophic droughts and unnatural fires have raged across our world for months, there could not be a more appropriate symbol or theme.

When God spoke to Moses through the burning bush, the wood was not consumed. Rather, the fire revealed

God's presence, and came with the assurance that God had heard his suffering children and wanted to rescue them from pain and

injustice. To accomplish God's will, Moses first had to listen to God. When he listened and followed God's instructions, Moses was able to accomplish miraculous things.

Climate change has caused tremendous suffering, both to the exquisite, nonhuman creatures who share our world and to our fellow children of God, especially those who were already in want. The Season of Creation is a time for us to listen for God's voice in creation to discern how we can best heal our world. As the Psalmist reminds us, the Earth does not belong to us. It belongs to God, as does everything in it, including us. It is not our place to destroy what our Maker has so beautifully crafted.

In our worship over the coming weeks, we'll talk about the state of our planet and how God might be calling his faithful people to repair the damage greed and consumerism have done. We'll celebrate the breathtaking beauty that Creation still holds, and explore the blessed opportunities for service that our circumstances offer. We'll regather from our summer adventures, renew our friendships and dream together about St. Luke's future. Every new season brings hope, especially the Season of Creation. May we listen to God's voice in creation with open minds and hopeful hearts.

God bless you,
Reverend Lauren+

Vestry Highlights

August Vestry Meeting Highlights

- Former construction Bob-cat platforms will be removed from the restoration site.
- New rental management agency being sought for the rectory.
- Congregations of St. Luke's and St. Philip's raised \$3090 for Sunniah.
- Claire Miller is serving on Racial Reconciliation Collaboration Banner Committee.
- Current Covid protocols will be posted in September House Call.
- Fall Ingathering Celebration planned for Sunday, September 18.
- Pastor Lauren shared short to mid-term and long-term goals to guide her ministry.
- Thank you to Lance Landseadel, Pastor Lauren's husband, for working in the church gardens.
- Next meeting is Saturday, September 17 at 10 a.m.

Submitted by,
Dianne Crews
Registrar

A Note from the Treasurer

Many thanks to everyone for your continuing financial support.

As a reminder, there are several ways by which you may keep your pledge up to date and provide other contributions:

- Drop your contribution in the collection plate on Sunday morning
- Send a check to the church (1101 Bay Ridge Avenue, Annapolis, MD 21403)
- Send payment to the church using your bank's automatic bill pay service, which often does not carry a fee
- Contribute online securely with Givelify (<https://goo.gl/Q4b37L> or visit our website at www.stlukeseastport.org and click on the Giving link at the top of the page). This method deducts a service fee of approximately 3% for each transaction, and so reduces your total gift amount to the church. Please consider adding an additional amount to each gift to cover this fee.

Treasurer's Report: 2022 Finances

As of July 31, 2022

<u>Income</u>	<u>Actual</u>	<u>Planned</u>
Pledges	59,129	72,917
Other	<u>23,153</u>	<u>18,985</u>

Total Income	82,282	91,902
---------------------	--------	--------

<u>Expenses:</u>	<u>80,681</u>	<u>84,958</u>
-------------------------	---------------	---------------

<u>Net Gain</u>	<u>1,601</u>	<u>6,944</u>
------------------------	--------------	--------------

Assets

Checking	44,761
-----------------	--------

Investments	81,863
--------------------	--------

Hybrid Worship Returning from COVID

COVID continues to be active in Anne Arundel County. New cases are declining, but the vestry remains concerned for the health and well-being of our congregation. We are continuing hybrid worship, allowing those who either have the virus or are particularly susceptible to join our services on Facebook or Zoom rather than in-person. If you are ill, please join us virtually until you are fully recovered. Masks are no longer required in church, but please feel very free to wear them if you are more comfortable doing so. Please be kind to those who choose to mask. When in church, keep a polite social distance from others, and refrain from physical contact like hugs and handshakes unless you are sure it is welcome.

We will continue to offer the Eucharist by shallow intinction, where the celebrant dips the edge of the wafer into the wine before giving it to the congregant. This practice, recommended by the Diocese of Maryland, minimizes the risk of COVID transmission. Rev. Lauren+ tests for COVID each week and uses hand sanitizer to further reduce the risk of contagion. We will continue to offer hospitality after services. The vestry will continue to monitor COVID in Anne Arundel and adjust our practices as circumstances evolve. Thank you for your understanding as we strive to keep each other safe while we worship and socialize.

Restoration of Nature Citizen Science Program Water Quality Procedure

The fourth and last training for making measurements in the St. Luke's Restoration of Nature Citizen Science program continues **Sunday, September 4**, with the Water Quality Procedure. The site for these measurements will require a walk to the woodland, and so sturdy walking shoes are advised. We will gather in the undercroft at approximately 11:30 during Hospitality Hour for a brief introduction, then walk to the woodland site to make the measurements. If you would like to participate in this measurement but are unable to attend this week, please contact Chuck Gallegos (gallegoscl@verizon.net) to arrange another time.

Fall Homecoming & New Ministry

On **September 18 at 10:00 a.m.**, St. Luke's will hold a special Ingathering service. We will officially welcome our new Priest-in-Charge, Rev. Lauren Bloom+, along with members who have joined or returned to St. Luke's since the pandemic (along with anyone else who'd appreciate a little extra greeting). Please let Dalyn or Rev. Lauren+ know if you'd like to be included in the welcome ceremony. Come worship, celebrate and renew your friendships with your fellow saints – welcome home to St. Luke's!

Thank you for Sunniah

Many thanks to all those who contributed to help fund Sunniah Nganzi Magogo's Master's degree in Public Health. With the help of our partners at St. Philip's Episcopal Church, we raised all the funds Sunniah will need for her tuition this year. Your generosity is a blessing to Sunniah and to her community, who will benefit from her understanding of malaria and other infectious diseases. Thank you!

September 11 Memorial Services

Sunday, September 11 is the 21st anniversary of the attacks on the Pentagon, World Trade Center and Stonycreek Township, Pennsylvania. Our **10:00 a.m.** service will include a memorial prayer in remembrance

of those who died in the attacks and their loved ones. Additionally, Rev. Lauren+ will conduct an evening prayer service on **Zoom** at **7:00 p.m.** that evening for those who wish to honor all who suffered that day and thereafter.

Outdoor Communion Service

Our next end-of-month Saturday outdoor communion service will take place on **September 24 at 5:00 p.m.** We will meet at the outdoor amphitheater, weather permitting, in the chapel if not. Please come as you are, ready to worship God surrounded by the beauty of Creation.

Mental Health First Aid



Mental Health First Aid training will be held in-person on **Saturday, October 22 AND Saturday, October 29 from 9 a.m. - 1 p.m.** at St. Luke's, Eastport.

Mental Health First Aid teaches you how to identify, understand and respond to signs of mental health and substance use challenges among adults. You will build skills and confidence you need to reach out and provide initial support to those who are struggling. You will also learn how to help connect them to appropriate support.

After the course, you will be able to:

- Recognize common signs and symptoms of mental health challenges
- Recognize common signs and symptoms of substance use challenges.
- Understand how to interact with a person in crisis.
- Know how to connect a person with help.
- Use self-care tools and techniques.

Contact the Parish Office at 410-268-5419 or email office@stlukeseastport.org.

Save the Date: Blessing of the Animals

Are you or someone you love proudly owned by a furry, feathered or finny friend? On **Saturday, October 1 at 10:00 a.m.**, please come with your beloved buddy to St. Luke's Blessing of the Animals, where we'll honor St. Francis of Assisi with a special service to bless our animal companions. All animals, including stuffies and photos, are invited to bring their people to church.

Light House Shelter Meal Support Ministry

St. Luke's is providing lunches to the Lighthouse shelter twice a month. Lesley Margerrison will coordinate the preparation and Linda Elkington will manage shopping for supplies. Everyone is invited to help make sandwiches after services during fellowship.

We are asking for volunteers to deliver the lunches to the shelter (on Hudson St., off West St.) on **September 5 and 12**. The sign-up sheet is located on the bulletin board downstairs.

For more information please contact Lesley Margerrison at lmargerrison@gmail.com

Hospitality Hour

St. Luke's offers a hospitality hour immediately following our Sunday services. Volunteer hosts are asked to set up the beverage station and bring light fare for persons attending the Sunday Service to enjoy.

The sign-up sheet for hosting Hospitality Hour on Sunday mornings is located downstairs in the Undercroft. Anyone is welcome to sign up to host. If you haven't hosted before, contact our Hospitality Hour coordinator, Kathy Dinin, to learn more: dinin.kathryn@gmail.com or 914-241-3966. Kathy can also help pair you with someone else if you don't want to host on your own.

Lunch Bunch

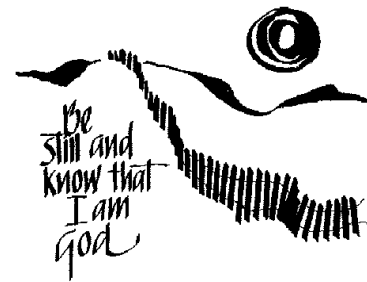
The Lunch Bunch is a weekly gathering for fellowship through sharing a meal. This Dutch treat meal takes place **Wednesdays at 12:00 p.m.** at [Adam's Ribs](#) in the Eastport Shopping Center, right next to the church. Who is invited? Everyone! Lunch Bunch is an open event organized by members of St. Luke's. Contact Dianne Crews 410-268-9741 or Helen Wheeler 410-224-3882 for more information. Friends and visitors are always welcome. No RSVP necessary.

Environmental Committee Meeting

The Environmental Committee at St. Luke's seeks to spread environmental stewardship through education, advocacy, and volunteerism on a teaching campus that heals the human spirit while caring for creation. The monthly meetings have been moved to the **FIRST Thursday of each month**. The next Meeting will be held on **Thursday, September 1** remotely via Zoom at **7 p.m.**

All are welcome to attend. For questions, contact Chuck Gallegos (gallegoscl@verizon.net) or Anne Arms (armspna@aol.com).

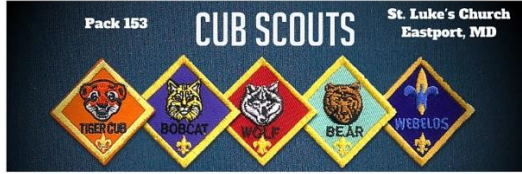
Contemplative Prayer



The Contemplative Prayer Practice continues to meet remotely via Zoom on **Fridays at 10 a.m.**

This practice invites us to experience rest and internal nourishment through silent prayer together. Anyone is welcome to join at any time. No experience necessary. For more information, contact co-facilitators Eve Waldman at eleanorevewaldman@gmail.com or 757-387-2367 and Chuck Gallegos at gallegoscl@verizon.net or 410-571-0562.

Cub Scout Pack 153 Scout Night



Join Scout Night for Pack 153 will be **Thursday, September 15th at 6:30 p.m.** in the Undercroft and Amphitheater area at St. Luke's Eastport.

Cub Scouts is for boys and girls, kindergarten to 5th grade. It is a program where youth develop the foundations for leadership, citizenship, and personal fitness through fun activities involving parents and legal guardians. For additional information, contact the Pack Leadership Team at cubscoutpack0153@gmail.com. General information about the Scouting Programs can be found at www.scouting.org.

Eastport Memorial Labyrinth Walk



The Labyrinth is an ancient tool for walking meditation and prayer, common to many faith traditions and cultures. Our journey to the center of the Labyrinth and back out again can be a powerful source of healing, inspiration, and peace.

The autumn Labyrinth Walk will be **October 8, 2022**

For questions, contact the parish office at 410-268-5419 or office@stlukeseastport.org.



St. Anne's Episcopal Rainbow Group

This ministry welcomes the fellowship and inclusion of LGBTQ+ individuals, their families, and allies, into parish life and worship at St. Anne's. Organized in 2018, the Rainbow Group continues to receive strong support from all of St. Anne's clergy, staff, and parishioners, to serve the many LGBTQ+ individuals and families of the Parish.

The 2022-2023 program year launches with the start of monthly get-togethers. A Brunch on **Sunday, October 16**, at [Harry Browne's](#) Restaurant on State Circle, immediately following the 10 a.m. St. Anne's Sunday service. We will have a special guest join us – a surprise! We will also host our clergy. Please invite a guest to join you.

On **Friday, November 18 at 6 p.m.**, we will meet for an old fashioned "pitch-in" dinner (with each of us preparing a delectable culinary contribution) at the Parish House on Friday evening. Beverages will be provided. Once again, we will have a special guest. Please invite a guest(s) to join you.

Claggett Center Happenings

Red Barn Capital Campaign featuring the Third Sunday Band



Fall Adult Programs



Visit www.claggettcenter.org for details.

Annapolis Pride Parade & Festival 2023

The 2023 Pride Parade and festival will be held in Annapolis on **Saturday June 3, 2023**.

Flower Ministry & Dedications

As we continue into 2022 with our Sunday worship services in the sanctuary, we are continuing the tradition of beautifying our worship space with two flower arrangements each week. These arrangements are funded through individual donations. If you would like to dedicate the flowers for a particular Sunday in 2022 in memory of someone or in honor of a special occasion, please contact our administrative assistant Dalyn Huntley at office@stlukeseastport.org or at 410-268-5419. The requested donation amount is \$50 and may be made either by check or online with the memo "Flowers." Following the service, the flowers are delivered to a member of the congregation to enjoy.

You don't need to be able to arrange flowers to join the Flower Ministry! We also need drivers who can pick up arrangements from our florist. If you're interested in learning more, contact Anne Arms at 707-479-4303 or armspna@aol.com.

Are you on our email list?

If you have an email address but are not receiving our weekly email newsletters each Wednesday, please let us know by emailing office@stlukeseastport.org. These weekly emails are an important means of communicating information to our community in between editions of the House Call. If you are not on email but would like to have a printout of the weekly "News from St. Luke's" sent to you by hard copy, please contact Dalyn Huntley in the church office: 410-268-5419.

House Call Deadline

The deadline for submission of materials for the October edition of House Call is no later than **Tuesday, September 26**. Submissions may be emailed to the office at office@stlukeseastport.org



St. Luke's has a long-standing tradition of remembering the birthdays and anniversaries of our members with a card and in the newsletter, as well as praying for those who are present on the preceding Sunday. If you are new to the St. Luke's community or unsure if we have your birthday/anniversary, please let us know when it is! Send the information to the office by phone or email (410-268-5419 or office@stlukeseastport.org).

September Birthdays

- | | |
|----|---------------------------------|
| 1 | Dawn Moorehead |
| 2 | Miriam Eliana Zarikian |
| 3 | Kathleen Wherthey |
| 5 | Casey Pearl Govoro; Paul Craley |
| 12 | Steve Agriesti |
| 13 | Fred Sandford |
| 20 | Peter Crews |

September Anniversaries

- | | |
|----|--------------------------|
| 14 | Katherine and Ron Govoro |
|----|--------------------------|

Prayer List

Ongoing Needs: Sunniah Ngonzi Magogo; Connie Harold; the Palermo Family; Heather Cook; Sydney Ponturo; Sally and Fred Sandford; Patty Peterson (friend of Helen & Jack Wheeler); Hilda Uribe (friend of Avedis & Olgui Zarikian); David Fogle; Jimmy Riccardi; Deacon Bob McCoy; Karen Sears-Wright (mother of Lexi Wright); Deacon Mary Walton; Olgui Zarikian; Lance Binnal (friend of Kathleen Rewa); Patricia; Linda Cunningham; Sarah Lamming; Lee Riley; Dagmar Kohring; Kathy Kotowski (friend of Eve & Mike Waldman); Jennifer Miles (friend of Kathleen Rewa); the Rev. Patti Sachs; Lucy Sprigg; Nelida Godfrey (family friend of Avedis & Olgui Zarikian).

Immediate Needs: Christine Kingerski (friend of Dan Ramirez); Nicole DeVino (friend of Dianne Crews); Lawrence Coleman; Ken Crisman (son-in-law's father of Sharon Williams); Fields & Reynold families; Anne Arms; the Rev. John Keydel; Andrew Schaner & family; the McGregor family; Anita (sister of Elaine Kazlauskas); Jack Wheeler; the Stankoski family.

For the Departed: **Gail Fields** (extended family of Amanda Reynolds); **Alice Black Millan** (grandmother of Andrew Schaner); **The Rev. William Beachey** (grandfather of the Rev. Diana Carroll); **Bill Huebl**; **Ned Stankoski** (friend of Dianne Crews)

St. Luke's Episcopal Church

410-268-5419 ~ office@stlukeseastport.org
www.stlukeseastport.org ~ Tw: [@stlukeseastport](https://twitter.com/stlukeseastport)
www.facebook.com/stlukeseastport

Episcopal Diocese of Maryland

The Rt. Rev. Eugene Taylor Sutton, Bishop
The Rt. Rev. Robert W. Ihloff, Assisting Bishop

Parish Staff

The Rev. Lauren M. Bloom, Priest-in-Charge
lbloom@stlukeseastport.org
Dr. Ildar Khannanov, Director of Music
drkhannanov@gmail.com
Dalyn Huntley, Administrative Assistant
office@stlukeseastport.org
The Rev. Norman Crews, Priest Associate

Parish Officers

Richard Wilson-Smith, Senior Warden
443-822-1978, richard@openpathproducts.com
Helen Leitch, Junior Warden
410-263-2783, leitchhelen@verizon.net
Pete Stark, Treasurer
410-269-9760, starkhe2@yahoo.com
Dianne Crews, Registrar
410-268-9741, dmackcrn@verzion.net

Ministry Contacts

Altar Guild	Dawn Moorehead 443-852-0371, dmorehead9@aol.com
Environmental Committee	Chuck Gallegos 443-758-3036, gallegoscl@verizon.net Anne Arms 707-479-4303, armspna@aol.com
Food Pantry	Mike Waldman 757-387-2251, mwaldman@juno.com
Flower Ministry	Anne Arms 707-479-4303, armspna@aol.com
Labyrinth Committee	Anne Arms 707-479-4303, armspna@aol.com

September 2002 House Call

St. Luke's Episcopal Church
1101 Bay Ridge Avenue
Annapolis, MD 21403